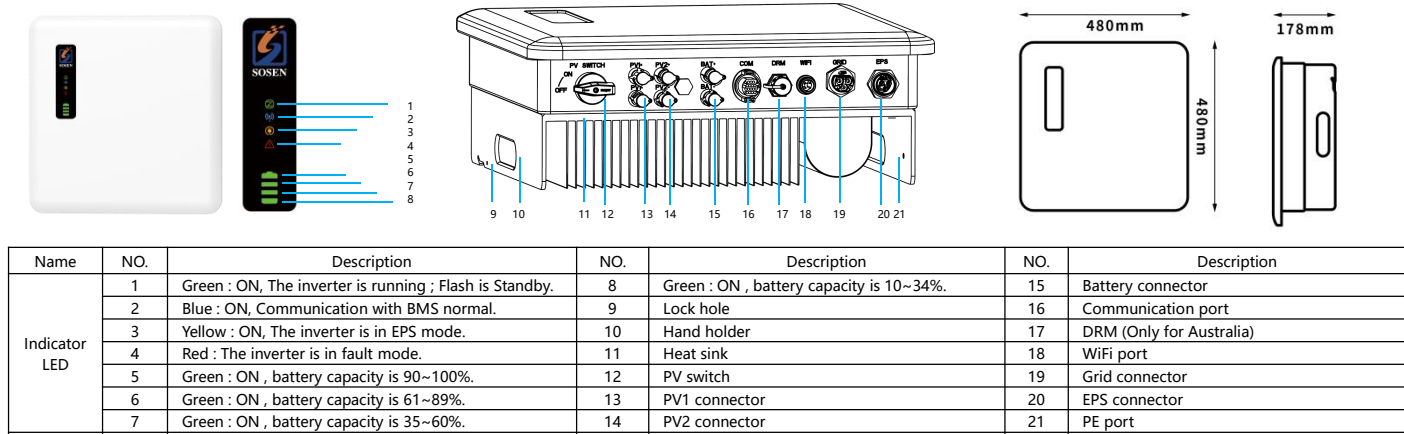


## 1.Overview

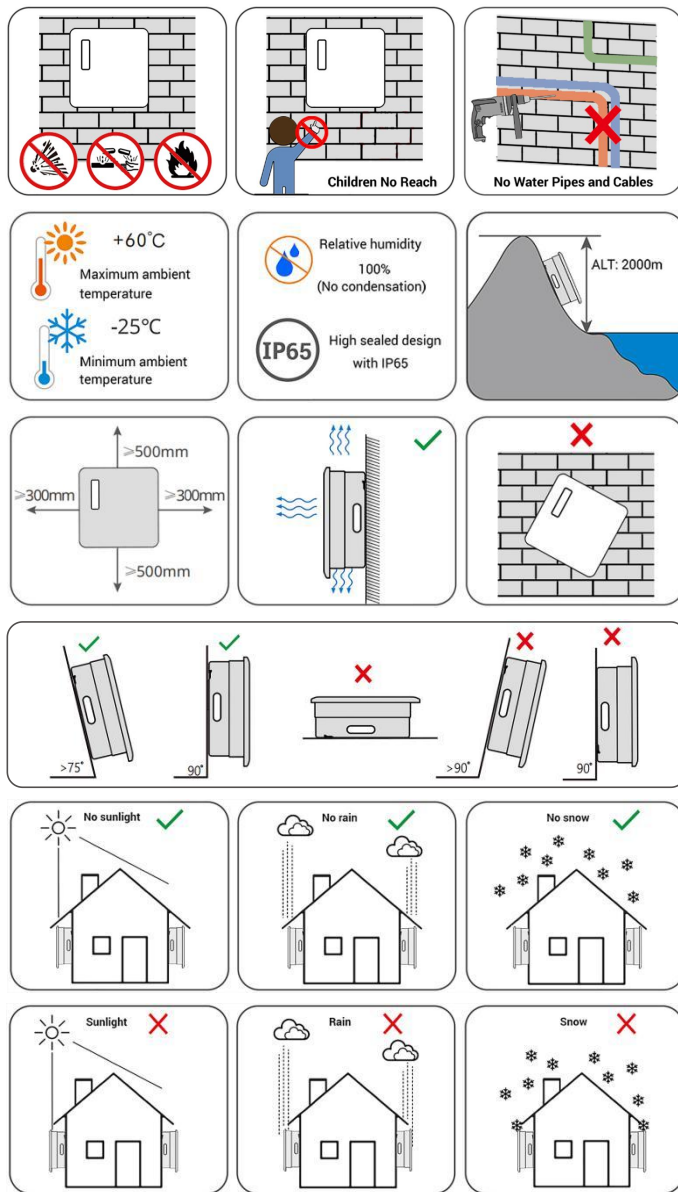


### WARNING

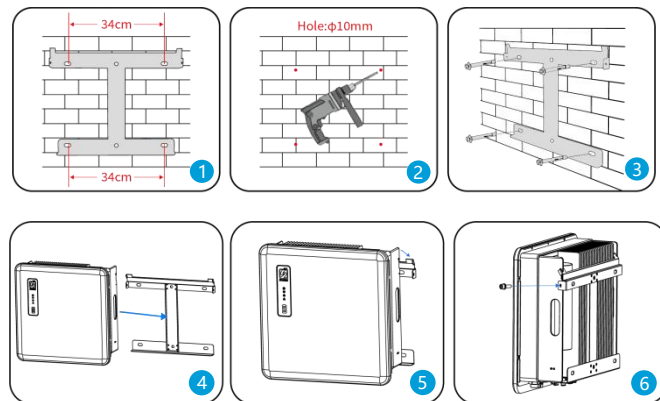
- 1.This file will be updated from time to time due to product upgrades or other reasons. Unless otherwise agreed, this document is intend as a guide only. All information and suggestions do not constitute an express or implied warranty. The final interpretation of the content is at SOSEN.
2. This document is for quick guidance installation only. For details, please refer to the User Manual.
3. Machine damage caused by failure to follow the content is not covered by the warranty.

## 2.Installation

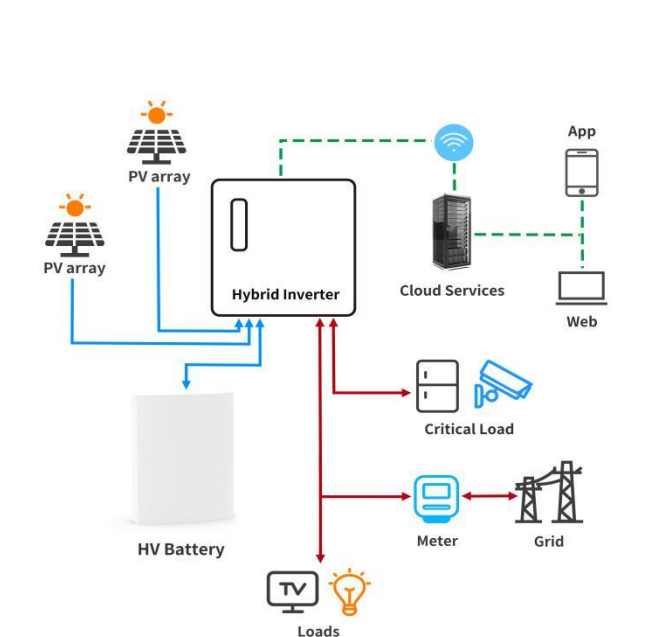
### 2.1 Installation Requirements



### 2.2 Installation Steps



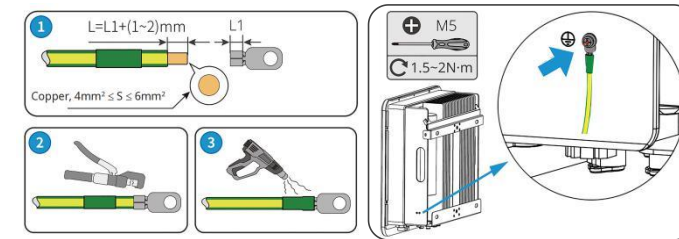
### 2.3 System View



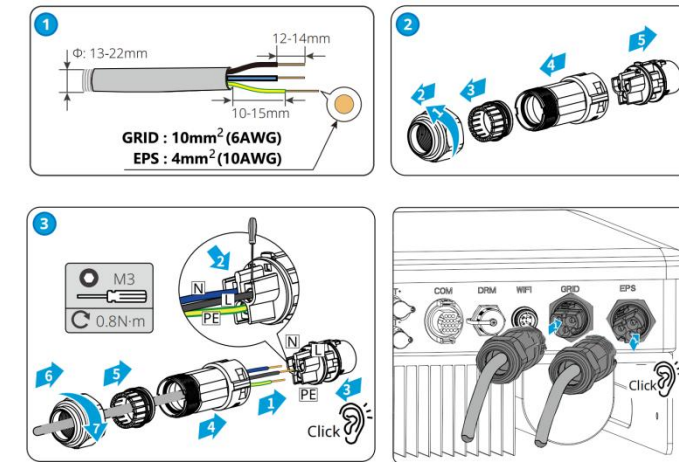
## 3.Connecting cables

| NO. | Cable name          | Type  | Recommend module                   | WARNING   |
|-----|---------------------|---|------------------------------------|---|
| 1   | Grounding cable     | Single multi-core yellow-green copper cable           | Cable diameter≥AWG10               | 1.Lithium battery has its own power line and communication line. so use them.<br>2.Hybrid inverter include the basic communication line. So use them directly.<br>3.Please make sure all the switches OFF before connection. For your safety.<br>Please do not operation when power on. |
| 2   | AC output cable     | Two or three different color multi-core copper cables | Cable diameter≥AWG10               |   |
| 3   | PV input cable      | Photovoltaic dedicated cable (such as PV1-F)          | 4mm <sup>2</sup> -6mm <sup>2</sup> |   |
| 4   | Battery cable       | Red and back multi-core copper                        | Cable diameter≥AWG6                |   |
| 5   | Communication cable | CAT5E   | /                                  |   |

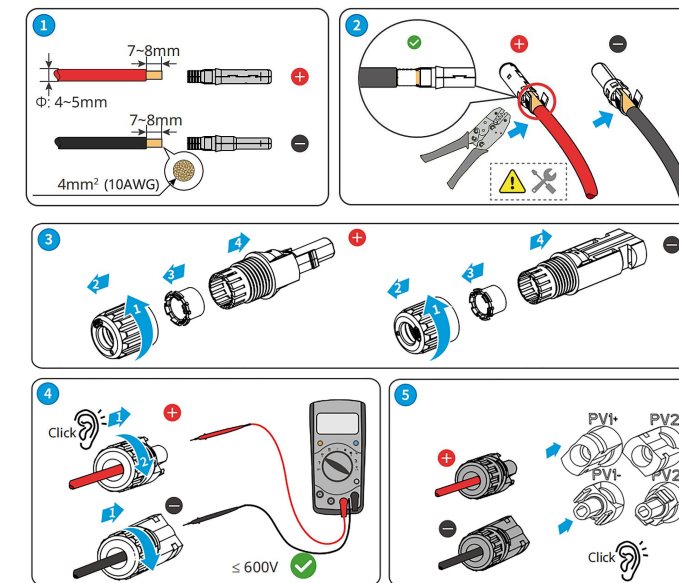
### 3.1 Grounding



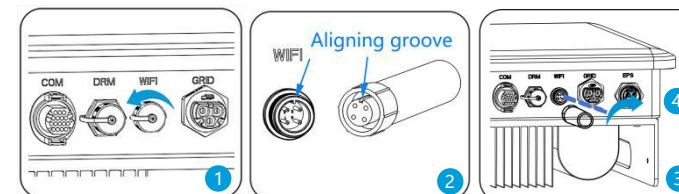
### 3.2 GRID and EPS Wiring



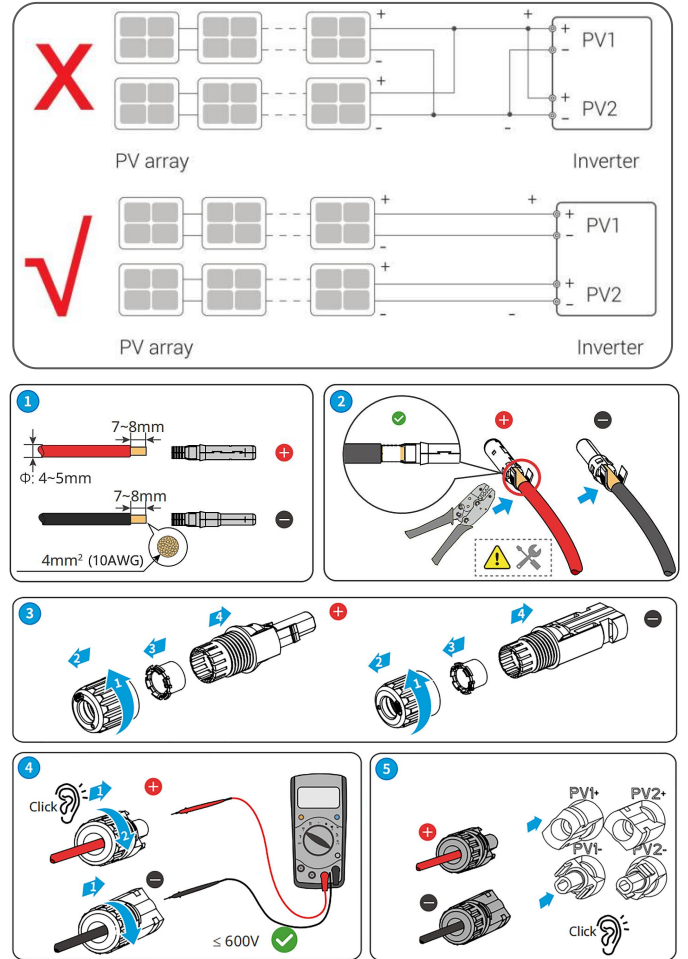
### 3.4 Battery Wiring



### 3.5 WiFi&BLE stick Installation



### 3.3 PV Wiring



## 4. Communication

|            | BMS_CAN  | BMS_485  | METER    | EMS_485  |
|------------|----------|----------|----------|----------|
| PIN        | 1        | 2        | 3        | 4        |
| Definition | NC       | NC       | BMS CANH | BMS CANL |
| PIN        | 9        | 10       | 11       | 12       |
| Definition | EMS 485A | EMS 485B | GND_COM  | NC       |












|            |          |          |            |            |
|------------|----------|----------|------------|------------|
| PIN        | 5        | 6        | 7          | 8          |
| Definition | BMS 485A | BMS 485B | METER 485A | METER 485B |
| PIN        | 13       | 14       | 15         | 16         |
| Definition | NC       | NC       | NC         | NC         |

- Follow the installation steps!
- 1.Remove the waterproof cover.
  - 2.Aligning groove.
  - 3.Plug in WiFi module.
  - 4.Revolve to lock the WiFi module.

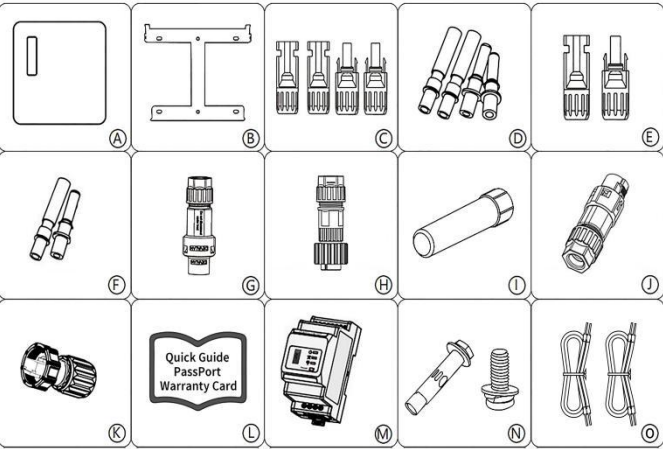
3.6 App Installation and Web Monitor

| Item    | Web View  | APP   | SOSEN Energy Web&APP manual   |
|---------|---|---|---|
| QR Code |  |  |          |
| Website | <a href="https://sosen.inteless.com/">https://sosen.inteless.com/</a>             | iOS/Android: search "SOSEN Energy"  | <a href="https://www.sosencx.com/download.html">https://www.sosencx.com/download.html</a> |

3.7 WiFi Indication

| LED  | State  | Indication   |  |
|--|--|--|--|
|   | Red LED:Inverter communication indication            |   | Green LED:Network communication indication |
|    | Cycle for 2S: flash once quickly, then glowing       | Cycle for 2S: flash once quickly, then glowing   |  |
|    | Not glow more than 20S                               | The power supply to the Wi-Fi&BLE stick is abnormal or damaged:<br>1. Check whether the power supply of the Aerial Plug Interface on the inverter is normal<br>2. Wi-Fi&BLE stick abnormal, contact the dealer |  |
|    | Cycle for 2S: flash once quickly, then off           | Communication failure:<br>Check whether the connection between the Wi-Fi&BLE stick and inverter is loose or poor contact   |  |
|    | When powered on, continuously glows 3S, and then off | Power on indication  |  |
|    | Glow more than 5S                                    | Communication is normal  |  |
|   | During the long glowing, flash occasionally          | Network transmit data  |  |
|  | Cycle for 20S: flash once quickly, then off          | The route is not connected:<br>1. Check whether the password is right<br>2. Check the strength of the router   |  |
|  | Cycle for 20S: flash 3 times continuously, then off  | Connect to the route, but can't connect to the cloud server:<br>1. Check whether the router has Internet access permission<br>2. Check the firewall setting  |  |
|  | Cycle for 20S: flash 4 times continuously, then off  | Wi-Fi&BLE stick information error: Please contact the dealer   |  |

4.What is in the box?




| Item | QTY | Description   | Item | QTY | Description  |
|------|-----|---|------|-----|--|
| A    | 1   | Inverter  | B    | 1   | Bracket  |
| C    | 4   | PV connectors (Black)<br>(2*positive, 2*negative)                                       | D    | 4   | PV pin contacts(Black)<br>(2*positive, 2*negative)                                   |
| E    | 2   | Battery connectors(Blue)<br>(1*positive, 1*negative)                                    | F    | 2   | Battery pin contacts(Blue)<br>(1*positive, 1*negative)                               |
| G    | 1   | AC EPS<br>terminal(Black)connectors   | H    | 1   | AC grid terminal(Blue)connectors   |
| I    | 1   | WiFi module   | J    | 1   | COM 16pin connector  |
| K    | 1   | DRM RJ45 connector(only<br>for Australia)   | L    | 3   | Quick Guide & PassPort<br>&Warranty Card   |
| M    | 1   | DDSU666 Single-phase<br>electronic type guide rail<br>mounting electric energy<br>meter | N    | 5   | M8*80 Expansion tubes *4 &<br>Expansion screws * 4<br>PM6*12 stainless steel screw*1 |
| O    | 2   | Cables(CAN & RS485)   |      |     |  |

5.Post-installation check

| step | Acceptance Criteria  | step | Acceptance Criteria  |
|------|--|------|--|
| 1    | Hybrid inverter is installed correctly and firmly                        | 2    | All switches off   |
| 3    | WiFi&BLE stick Installation is installed correctly and firmly.           | 4    | The ground wire confirms the connection and is reliable.   |
| 5    | Cable wiring is reasonable, meets the requirements, no broken skin, etc. | 6    | All wires are correct and securely connected.              |
| 7    | Cable tie port trimming, no sharp corners, etc.                          | 8    | All exposed terminals are well protected, no vacant ports. |
| 9    | Pay attention to packing all the residual materials.                     |      |  |

6.ON/OFF Hybrid Inverter

 **NOTICE**

Before power on, please make sure all of the voltage and current are in the range of specification of hybrid inverter. Otherwise it will be damage to hybrid inverter.

Follow are the steps of turn on actions:

- 1.Turn on PV switch.
- 2.Turn on the switch between Grid and hybrid inverter.
- 3.Turn on the switch between battery and hybrid inverter and wake up battery.
- 4 .If need to setup hybrid inverter. Please turn to user manual of hybrid inverter for detail description.
- 5.The shutdown steps are opposite to the above order.



SHENZHEN SOSEN INNOVATION TECHNOLOGY CO.,LTD

[www.sosencx.com](http://www.sosencx.com)

E-mail: [market@sosen.com](mailto:market@sosen.com)

Tel/Fax +86 755-85244504

Add:Room601,Pengzhanhui No.1 Building,Zhongxin Road No233,Xinqiao Community,Xinqiao Street,Baoan District,Shenzhen,China518104